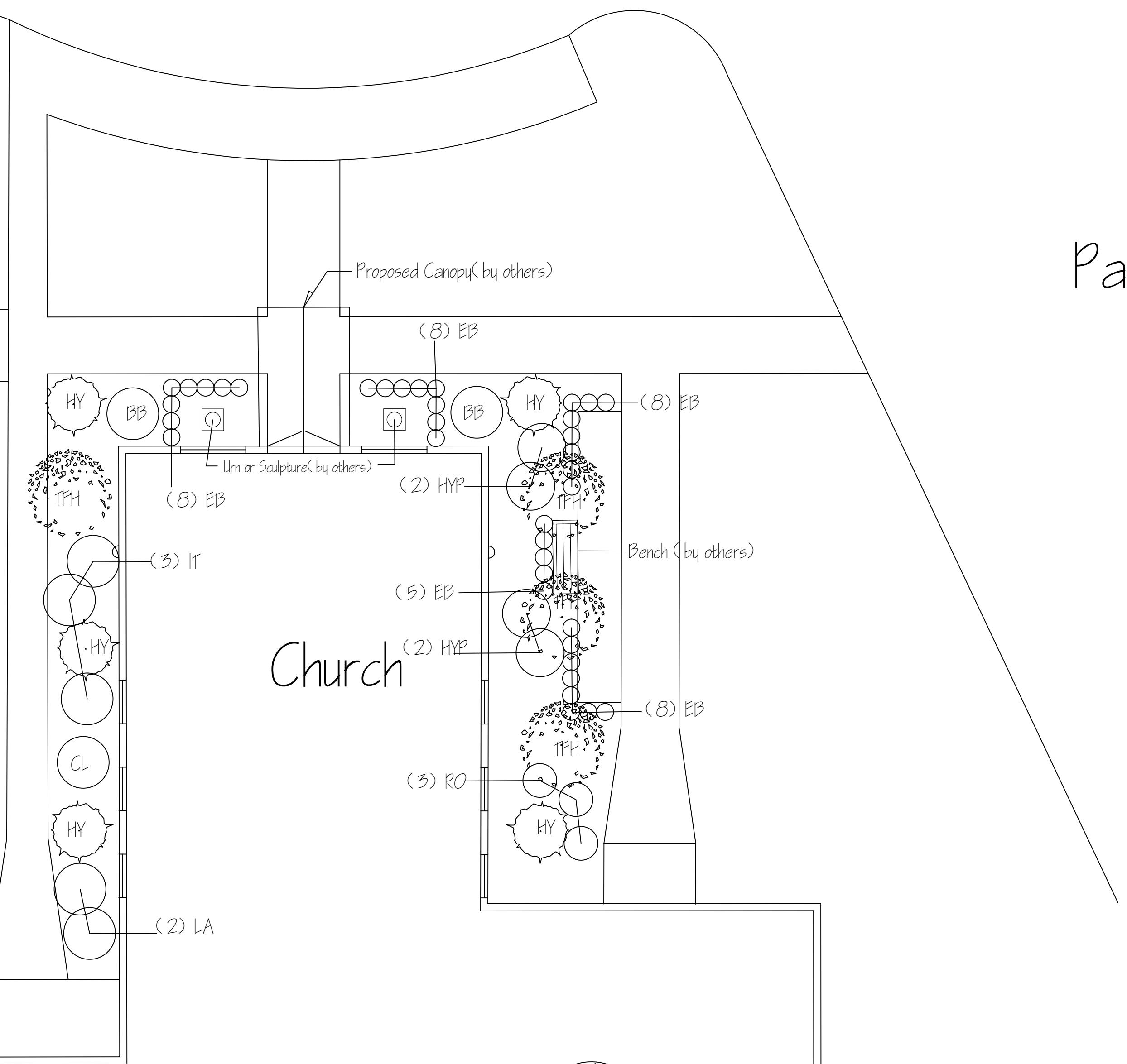
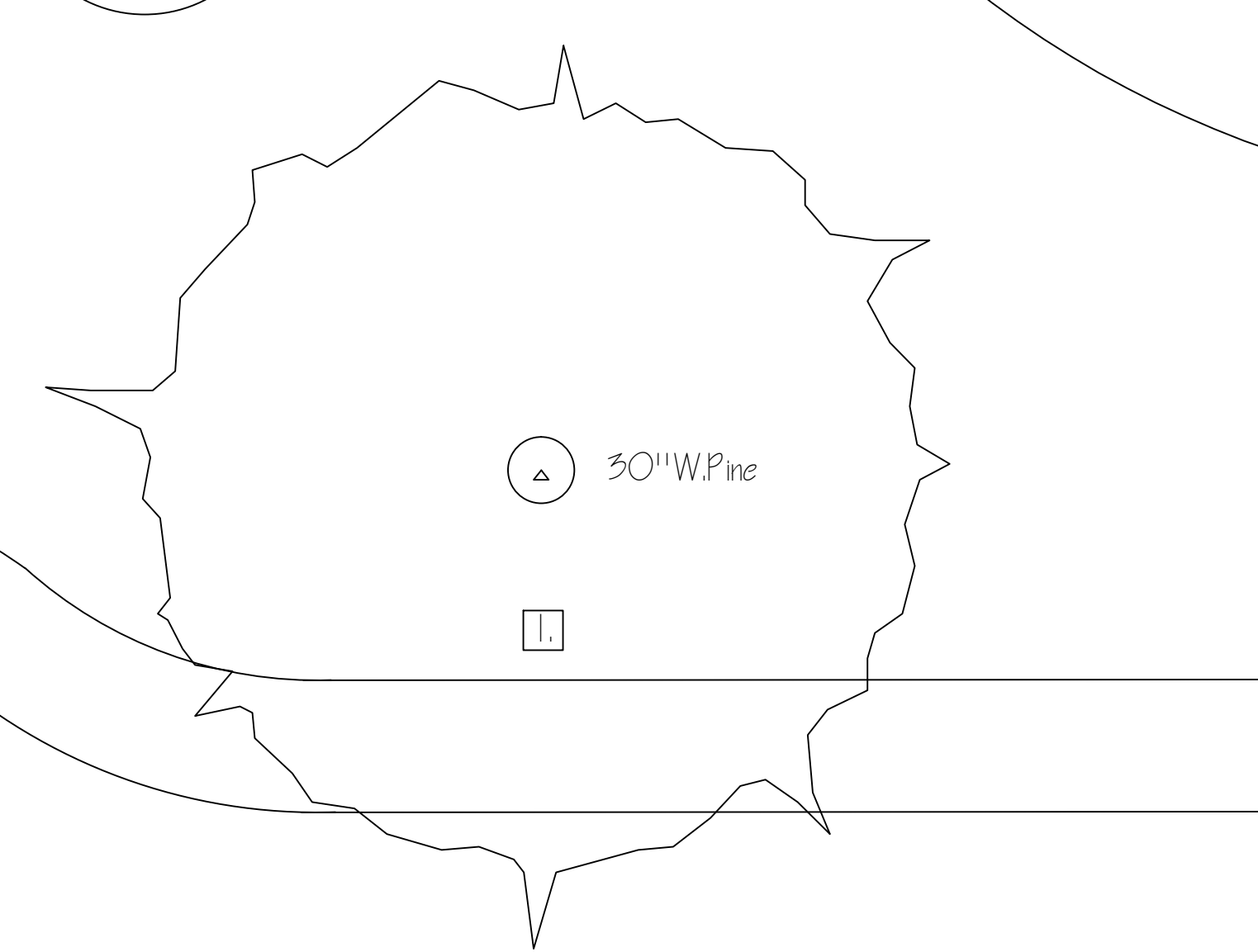
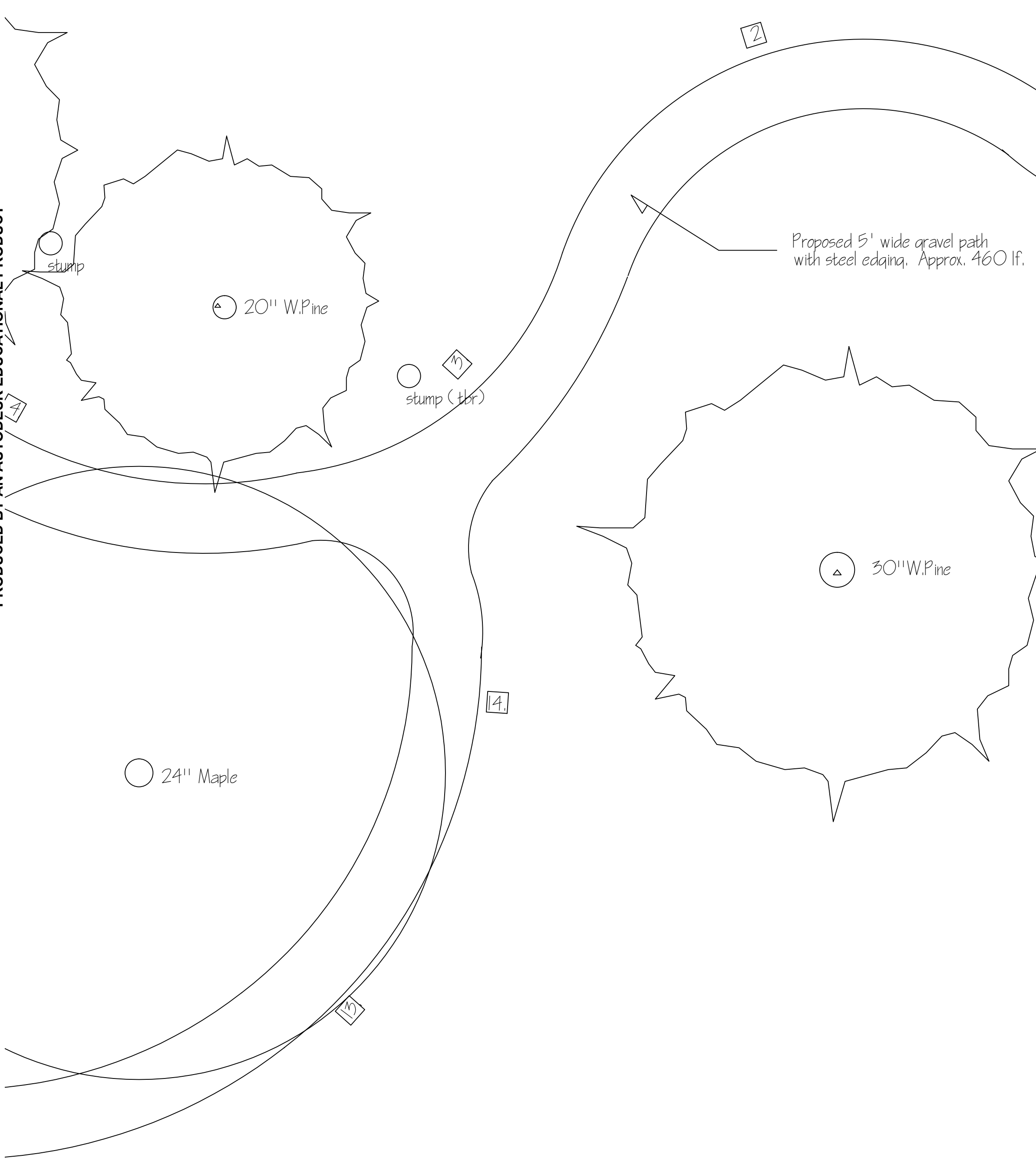
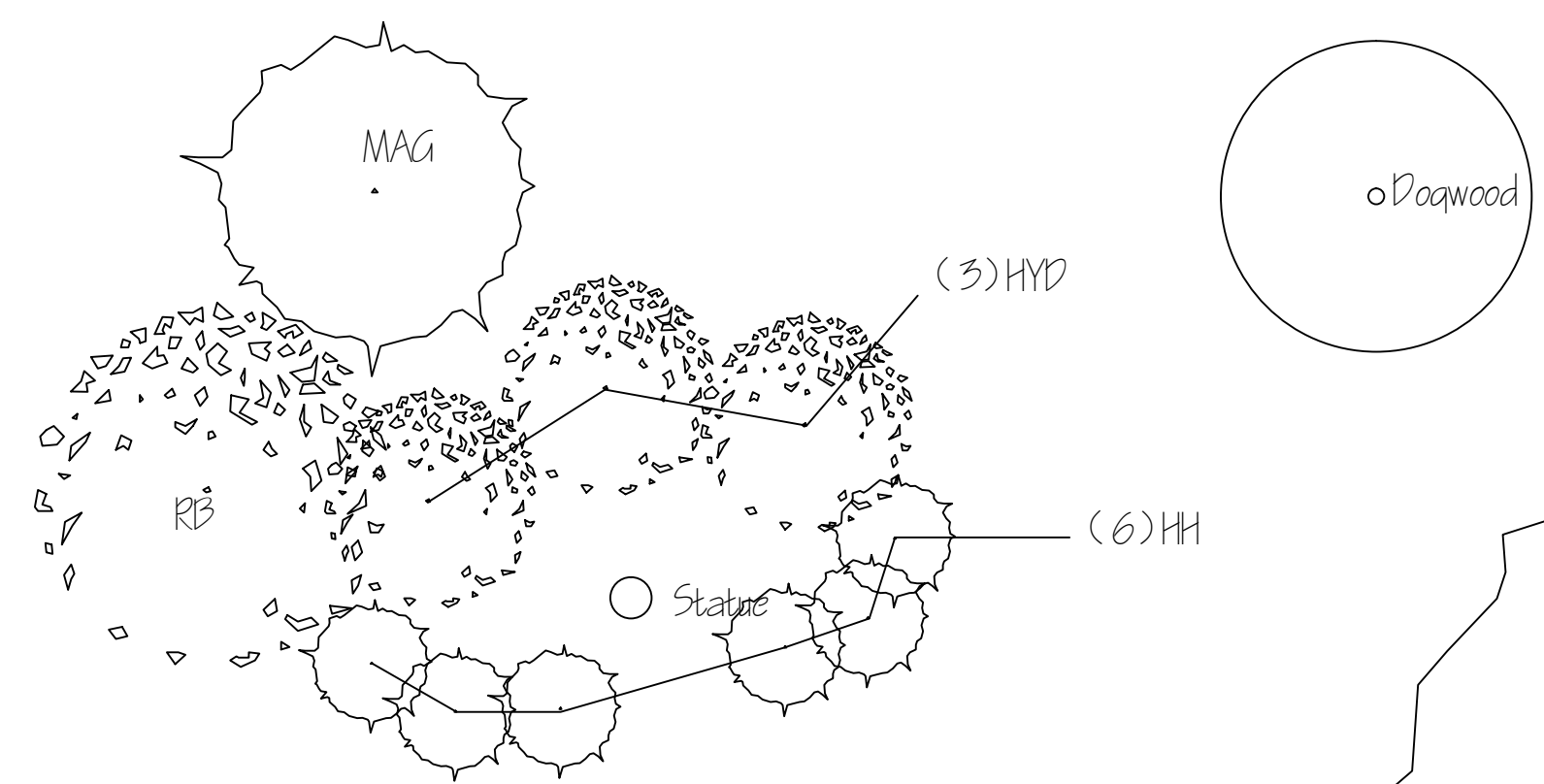


Rectory

Drive

Parking



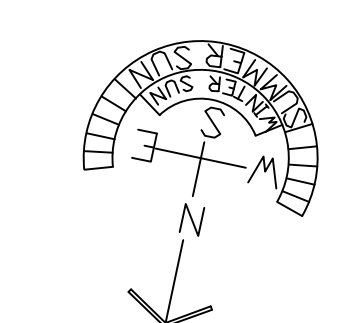
PLANT LIST (CHURCH)

- BB Butterfly Bush 'Lo & Behold' dwarf variety (2)
- CL Clethra 'Ruby Spice' (1)
- EB Dwarf English Boxwood 'Suffruticosa' (37)
- HY 'Hicks' Yew or 'Deerlink' Boxwood or Dwf. Alberta Spruce (5)
- HYP Hypericum 'Sunburst' (4)
- LA Lacecap Hydrangea (2)
- IT Itea 'Little Henry' (3)
- RO Rose Drift variety (3)
- TF Treeform Hydrangea 'Limelight' (4)

Notes: All material 3-5 gal. with exception of Hicks Yew; 7 gal or 3-4' Treeform hydrangea 7 gal or 4-5' B&B Substitutions permitted upon approval by DRLD.

Proposed 5' wide gravel path with steel edging. Approx. 460 lf.

CALL BEFORE YOU DIG!! DIAL 811



Down River Landscape Design www.downriverlandscapedesign.com 940-742-3306	Our Lady of the Valley Catholic Church 200 Collins Ave. Luray, VA	SCALE 1" = 6'	2 / 2
		DRAWN BY KS	
REV.1	REV.2		